

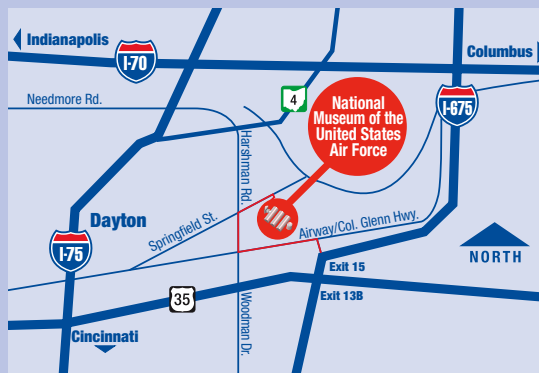


NATIONAL MUSEUM OF THE UNITED STATES AIR FORCE

*We are the
Keepers
of their
Stories*



DIRECTIONS



Directions

From the North taking I-75 South:

Take Exit 61A to I-70E

From I-70E take Exit 44A to I-675S

From I-675S take Exit 15

Follow signs to museum

From the South taking I-75 North:

Take Exit 43 to I-675N

From I-675N take Exit 15

Follow signs to museum

From the East taking I-70 West:

From I-70W take Exit 44A to I-675S

From I-675S take Exit 15

Follow signs to museum

From the West taking I-70 East:

From I-70E take Exit 44A to I-675S

On I-675S take Exit 15

Follow signs to museum

CONTACT

Hours

Open seven days a week from 9 a.m. to 5 p.m. Closed Thanksgiving, Christmas and New Year's Day.

Admission

FREE admission and parking.
Charge for IMAX Theatre.

Souvenir Shop/Bookstore

(937) 258-1218 or visit www.afmuseum.com

IMAX® Theatre

Call (937) 253-IMAX for ticket prices.

Web Site

www.wpafb.af.mil/museum



NATIONAL MUSEUM OF THE UNITED STATES AIR FORCE

1100 Spaatz Street
Wright-Patterson Air Force Base, OH 45433-7102
(937) 255-3286

NATIONAL MUSEUM OF THE UNITED STATES AIR FORCE

The Main Complex



Nissen Hut



Habitat Displays



Featuring over 17 acres of exhibits, the museum includes an outdoor Air Park, World War II Nissen Hut and Control Tower. Visitors are invited to explore the inside of these facilities, authentically recreated to depict their use during World War II.

Located next to the 8th Air Force Control Tower, the Nissen Hut portrays a 1940's bar and briefing room of an Army Air Corps Fighter Escort Squadron stationed in England. Photos, music and mannequins create an authentic mood, with scenes depicting a pre-mission briefing and airmen winding down with a game of cards and checkers as music stirs from a phonograph.

Placing aircraft in proper historical context and making the stories more accessible to museum visitors, the museum's galleries portray sensory-rich exhibits that feature mannequins, theatrical lighting and sound effects.

These habitats dramatize the Air Force and military aviation storyline, bringing history to life and capturing the human themes of duty, sacrifice and honor demonstrated by Air Force men and women through the years.

NATIONAL MUSEUM OF THE UNITED STATES AIR FORCE

Awe-inspiring aircraft. Visually striking exhibits. Dynamic major events. It's all part of the visitor experience at the National Museum of the United States Air Force, the world's largest and oldest military aviation museum and the official museum of the U.S. Air Force.

Located near Dayton, Ohio, the museum welcomes 1.2 million visitors each year. As the public's window on the Air Force, the museum dramatizes the service's mission, history and evolving capabilities and highlights the enduring themes of vision and innovation



Medal of Honor



Billy Mitchell Memorabilia

that's part of the Air Force story and military aviation tradition.

The museum's galleries present military aviation history, boasting more than 300 aircraft and aerospace vehicles – many rare and one-of-a-kind, thousands of historical items, and powerful sensory exhibits that bring history to life and connect the Wright brothers' legacy with today's stealth and precision technology. These galleries animate the museum's slogan, "We Are the Keepers of Their Stories," by presenting the human themes of courage, sacrifice, honor and duty demonstrated by Air Force people and military air power pioneers through the years.

Early Years Gallery

The Early Years Gallery blazes a path from the earliest days of military aviation to the early 1940s. Aircraft on display include a rare SPAD XIII, Caproni CA 36 bomber and an MB-2 bomber, among many others. The gallery storyline begins with the Wright brothers and continues through the

Mexican Punitive Expedition, World War I, research and development in the 1930s and the United States' preparation for World War II.

Air Power Gallery

The heroism and drama of World War II air power take center stage in the museum's Air Power Gallery, containing Army Air Forces pursuit aircraft and bombers. Visitors can view a Doolittle Raiders' exhibit surrounding a B-25B, stand next to the B-29 "Bockscar" that dropped the atomic bomb on Nagasaki and see other rare WWII era aircraft such as the B-24D, P-61C, Martin B-26G, and the B-17G "Shoo Shoo Shoo Baby." The gallery's chronology tells the Army Air Forces story, from the China-Burma-India theater to the Mediterranean, European, and Pacific theaters and back to the home front.

Cold War Gallery



Modern Flight Gallery

The Modern Flight Gallery portrays the Air Force's involvement in the Korean and Vietnam Wars. Visitors can see aircraft such as an F-86A, F-105G and the hulking B-52, as well as aircraft promising to transform Air Force air power, including a prototype of the F/A-22 Raptor, and unmanned aircraft such as the Predator and Global Hawk.

Cold War Gallery

The Cold War Gallery is located in the museum's latest major hangar, the 200,000 square-foot Eugene W. Kettering Building. The gallery explores the Air Force's vital role in defeating Soviet communism and in



SR-71

waging the war on terrorism. Prominent aircraft include the imposing B-36J bomber and the RB-47 as well as modern favorites such as the F-117 stealth fighter, A-10 "Warthog," F-15, an F-16 in U.S. Air Force Thunderbird colors and the first permanent public display of a B-2 stealth bomber.

Missile and Space Gallery

Part of the museum's expansion, the Missile/Space Gallery combines with the Cold War Gallery to explore the Air Force's historical and critical contributions toward Soviet containment and to convey the Air Force's key role in America's advance into space. Featuring a viewing platform, the silo-like structure houses space launch vehicles and the museum's world-class collection of Intercontinental Ballistic Missiles.

Presidential and Research and Development/Flight Test Galleries

An especially popular museum attraction is its storied collection of nine Presidential aircraft. Visitors can walk through four of the most notable aircraft, including Franklin D. Roosevelt's C-54C "Sacred Cow," Harry Truman's VC-118 "Independence," and Dwight D. Eisenhower's VC-121E "Columbine III." Most popular of all is "Air Force One," a VC-137C known as SAM (Special Air Mission) 26000. This Boeing 707 flew President Kennedy's body back to Washington D.C. from Dallas and served as the site of President Lyndon B. Johnson's swearing in. The aircraft served every U.S. president from Kennedy to Clinton.

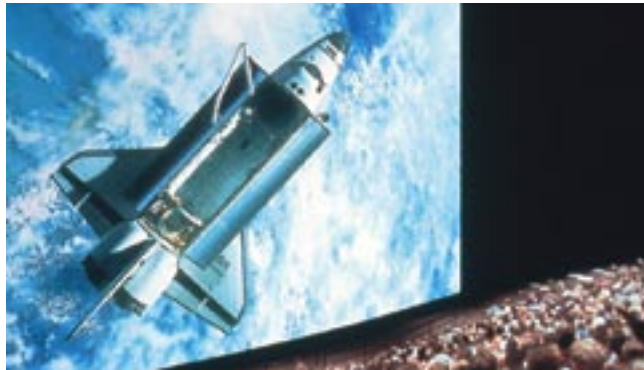
NATIONAL MUSEUM OF THE UNITED STATES AIR FORCE

The Research and Development/Flight Test Gallery houses the museum's diverse experimental aircraft collection. Highlighting this group is the only remaining North American XB-70 Valkyrie, the only Douglas X-3 "Stiletto" ever built and the Bell X-1B, a later model of the type in which Chuck Yeager broke the sound barrier.

The Presidential and Research and Development/Flight Test Galleries are located in a twin hangar facility on the old Wright Field flight line, about one mile from the main museum. Individuals may visit these galleries by registering on a first-come, first-served basis for a shuttle bus that runs from the museum main complex to the galleries and back.

Memorial Park

Located outside at the south end of the museum, the museum's Memorial Park honors the Air



IMAX® Theatre

Force-associated people and units for their past service and sacrifice in the cause of freedom. The park features nearly 500 dedications.

Friends of the Air Force Museum

Those who wish to support the museum and keep informed of its activities can become a "Friend of the Air Force Museum." For an annual membership fee, members receive benefits and privileges such as discounts in the bookstore and souvenir shop, quarterly journals,

a museum calendar, and more. For more information, visit the Air Force Museum Foundation web site at www.afmuseum.com.

IMAX® Theatre

A six-story, 500-seat IMAX Theatre offers a dramatic and powerful film viewing experience, with action and sound that place the viewer directly into the intensity and adventure of the scenes. Shows start on the hour each day. For current prices, special rates and schedule, stop by the IMAX ticket booth, call (937) 253-IMAX or visit the Air Force Museum Foundation's web site at www.afmuseum.com.

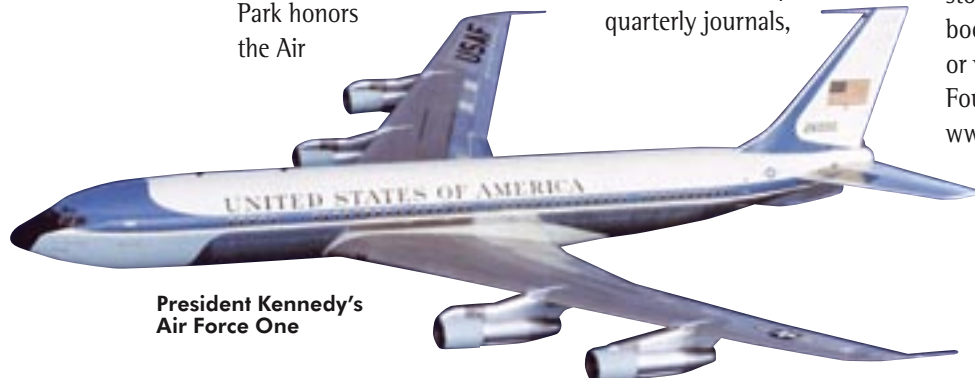
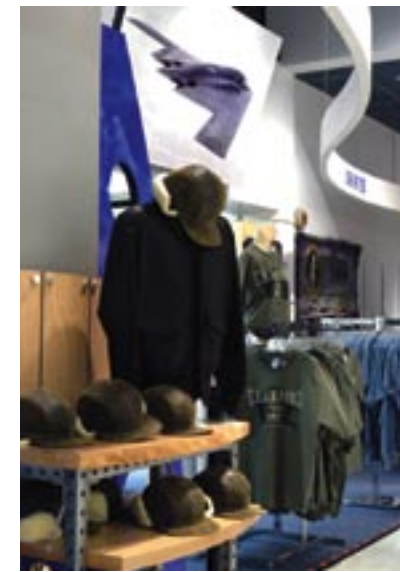
Morphis MovieRide

Visitors can enjoy Morphis MovieRide Theatre, a flight simulator that seats 14 people. Passengers can thrill to the sensation of flying in a fighter jet. For price information, call (937) 253-IMAX or visit www.afmuseum.com.

Souvenir Shop/Bookstore

The museum's souvenir shop and bookstore provide a broad selection of Air Force and military aviation-related merchandise. Shoppers can choose from books, apparel, model aircraft, music, videos, children's toys and much more. For more information, call (937) 258-1218 or visit www.afmuseum.com.

Souvenir Shop



**President Kennedy's
Air Force One**

NATIONAL MUSEUM OF THE UNITED STATES AIR FORCE

World War II Tower
Nissen Hut
Air Park
↑



- Exit
- W** Women's Restroom
- M** Men's Restroom
- F** Family Restrooms
- T** Telephone
- E** Elevator

MUSEUM GALLERY PHOTOS



Wright 1909 Military Flyer



Boeing B-17G Flying Fortress "Shoo Shoo Shoo Baby"



Lockheed F-117A Nighthawk



Martin MB-2



Boeing B-52D Stratofortress



Lockheed-Boeing-General Dynamics YF-22 Raptor



Curtiss P-40E Warhawk



Boeing B-1B Lancer



Northrop B-2 Spirit

MUSEUM GALLERY LISTING

Early Years Gallery

- Wright 1909 Military Flyer
- Curtiss 1911 Model D
- Bleriot Monoplane
- Spad VII
- Curtiss JN-4D Jenny
- Standard J-1
- Thomas-Morse S4C Scout
- Avro 504K
- Nieuport N.28C-1
- Sopwith F-1 Camel
- Fokker Dr. I
- McCook Field Wind Tunnel
- Caquot Type R Observation Balloon
- Standard J-1 (Fabric removed)
- Halberstadt CL IV
- SPAD XIII
- Fokker D. VII
- Kettering Aerial Torpedo "Bug"
- Caproni Ca. 36 Bomber
- DeHavilland DH-4B
- Packard LePere LUSAC
- Eberhart SE-5E
- Verville-Sperry M-1 Messenger
- Martin MB-2
- Loening OA-1A
- Consolidated PT-1 Trusty
- Boeing P-12E
- Curtiss P-6E Hawk
- Boeing P-26A
- Martin B-10
- Douglas O-38F
- Northrop A-17A
- North American O-47B
- Curtiss O-52 Owl
- North American BT-14
- Ryan YPT-16
- Fairchild PT-19 Cornell
- Hawker Hurricane MkIIa
- DH 82A Tiger Moth
- Kellet K-2/K-3 Autogiro

Air Power Gallery—World War II

- Curtiss P-36A Hawk
- Seversky P-35A
- Douglas B-18 Bolo
- Mitsubishi A6M2 Zero
- Douglas A-24
- Vultee L-1A Vigilant
- Taylorcraft L-2M "Grasshopper"
- Focke-Achgelis Fa-330 Sandpiper
- North American B-25B Mitchell
- Bell P-39Q Airacobra
- Curtiss P-40E Warhawk
- Ryan PT-22 Recruit
- Curtiss A-25A "Shrike"
- Vultee BT-13B Valiant
- Curtiss AT-9 Jeep/Fledgling
- Beech AT-10 Wichita
- Beech AT-11 Kansan
- Bell P-63E Kingcobra
- Radioplane OQ-2A
- Radioplane OQ-14
- Piper L-4 "Grasshopper"
- Supermarine Spitfire Mk.Vc
- Macchi MC-200 Saetta
- Fieseler Fi 156C-1 Storch
- Bristol Beaufighter
- North American A-36A Apache
- Consolidated B-24D Liberator
- Lockheed P-38L Lightning
- Supermarine Spitfire MK XI
- Schweizer TG-3A
- Laister-Kauffmann TG-4A
- Stearman PT-13D
- Martin B-26G Marauder
- Republic P-47D (Bubble Canopy)
- Douglas C-47D Skytrain
- Waco CG-4A Hadrian
- Messerschmitt Bf 109G-10
- Junkers Ju 88D
- Focke-Wulf Fw 190D-9
- Messerschmitt Me 163B
- Messerschmitt Me 262A Schwalbe
- JB-2 Loon (V-1 Buzz Bomb)
- V-2 on Meilerwagen
- Boeing B-17G Flying Fortress
- North American P-51D Mustang
- Beech UC-43 Traveler
- Noorduyn UC-64A Norseman
- Cessna UC-78B Bobcat
- Curtiss C-46D Commando
- Sikorsky R-4B Hoverfly
- Stinson L-5 Sentinel
- Republic P-47D (Razorback)
- Douglas A-20G Havoc
- Consolidated OA-10 Catalina
- Sikorsky R-6A Hoverfly II
- Northrop P-61C Black Widow
- Kawanishi N1K2-J "George"
- Yokosuka MXY7-K1 Ohka Trainer
- Boeing B-29 Superfortress
- Aeronca L-3B "Grasshopper"
- Interstate L-6 "Grasshopper"

Modern Flight Gallery Korea & Southeast Asia Exhibits

- North American F-86A Sabre
- MiG-15bis "Fagot"
- Lockheed F-94A Starfire
- Sikorsky YH-5A
- Sikorsky UH-19B Chickasaw
- North American F-82B Twin Mustang
- Douglas B-26C Invader
- B-29 Walk-through Fuselage
- North American T-6D "Mosquito"
- North American B-45C Tornado
- Douglas C-124C Globemaster
- Lockheed F-80C
- Culver PQ-14B
- North American L-17A Navion
- Republic F-84E Thunderjet
- Boeing B-52D Stratofortress
- North American T-28B Trojan
- North American F-100F Super Sabre
- Douglas A-1E Skyraider
- LTV A-7D Corsair II
- Martin EB-57B Canberra
- Northrop YF-5A
- Douglas B-26K (A-26A) Counter Invader
- McDonnell RF-101C Voodoo
- Cessna O-1G
- Cessna O-2A Skymaster
- North American Rockwell OV-10A Bronco
- Kaman HH-43B Huskie
- Sikorsky CH-3E
- Bell UH-1P Iroquois
- Mikoyan-Gurevich Mig-21PF "Fishbed"
- Fairchild C-123K Provider
- Republic F-105D Thunderchief
- DeHavilland C-7A Caribou
- McDonnell Douglas F-4C Phantom II
- F-4 Phantom Sit-in Cockpit
- Helio U-10D Super Courier
- Teledyne Ryan AQM-34L Firebee
- Beech QU-22B
- General Dynamics F-111A
- Douglas RB-66B Destroyer
- Cessna YA-37A Dragonfly
- Lockheed EC-121D Constellation
- Mikoyan-Gurevich Mig-17 Fresco
- SA-2 Surface-to-Air Missile
- Republic F-105G Thunderchief

Center Area

- Wright Modified B Flyer
- Lockheed-Boeing-General Dynamics YF-22 Raptor
- General Atomics RQ-1A Predator
- Northrop Grumman RQ-4A Global Hawk
- Boeing Bird of Prey
- Northrop Tacit Blue
- McDonnell Douglas X-36

MUSEUM GALLERY LISTING

Cold War Gallery

- Grumman OA-12 Duck
- Convair B-36J Peacemaker
- North American T-28A Trojan
- North American F-86D Sabre
- Northrop F-89J Scorpion
- Lockheed F-94C Starfire
- Avro CF-100 Mk IV Canuck
- Lockheed T-33A Shooting Star
- Beech T-34A Mentor
- North American RF-86F
- Republic RF-84K
- Boeing WB-50D Superfortress
- Northrup XR-62 Snark
- Cessna LC-126A
- Vertol CH-21B Workhorse
- Grumman HU-16B Albatross
- De Havilland U-6A Beaver
- Boeing KC-97L Stratofreighter
- Republic F-84F Thunderstreak
- North American F-86H Sabre
- Lockheed F-104C Starfighter
- Martin TM-61A Matador
- Martin CGM-13B Mace
- Cessna U-3A
- Cessna T-37B Tweety Bird
- Convair B-58 Hustler
- North American AGM-28B Hound Dog
- McDonnell ADM-20 Quail
- Boeing RB-47H
- Mikoyan-Gurevich MiG-19S "Farmer"
- Lockheed U-2A
- Martin RB-57D
- Convair F-102A Delta Dagger
- McDonnell F-101B Voodoo
- Convair F-106A Delta Dart
- Douglas C-133A Cargomaster
- Boeing CIM-10 Bomarc
- Ryan AQM-34N
- Lockheed SR-71A
- Lockheed D-21B
- McDonnell Douglas F-15A
- Northrop AT-38B
- General Dynamics F-16A Fighting Falcon
- F-16 Sit-in Cockpit
- Mikoyan-Gurevich MiG-23MLD "Flogger K"
- Mikoyan-Gurevich MiG-29 "Fulcrum"
- Ryan BQM-34F Firebee II
- Northrop T-38A Talon
- Cessna T-41A Mescalero
- Dart Aerial Gunnery Target
- Beechcraft MQM-107 Streaker
- Teledyne Ryan AQM-91A Compass Arrow
- Boeing YCGM-121B Seek Spinner
- General Dynamics F-111F Aardvark
- General Dynamics EF-111A Raven
- Lockheed F-117A Nighthawk
- McDonnell Douglas F-4G "Wild Weasel"
- Lockheed AC-130A "Azrael"
- Fairchild Republic A-10A Thunderbolt II
- McDonnell Douglas RF-4C Phantom II
- Boeing AGM-86B (ALCM)
- Northrop BQM-74C
- General Dynamics AGM-129A
- Northrop AGM-136 Tacit Rainbow
- Panavia Tornado
- Boeing B-1B Lancer
- Boeing X-45 UCAV
- Northrop B-2 Spirit

Missile/Space Gallery

Missiles

- Chrysler PGM-11A Redstone
- Douglas SM-75/PGM-17A Thor
- Chrysler SM-78/PGM-19A Jupiter
- Convair SM-65 Atlas
- Martin/Martin Marietta SM-68A/HGM-25A Titan I
- Boeing LGM-30B Minuteman I
- Minuteman II Mission Procedures Trainer
- Martin Marietta SM-68B/LGM-25C Titan II
- Boeing LGM-30B Minuteman III
- Minuteman III RV Bus
- Martin Marietta LGM-118A Peacekeeper
- Peacekeeper RV Bus

Propulsion

- S-3D rocket engine
- LR-87 rocket engine
- XLR-99 rocket engine

Missile/Satellite Launch and Recovery

- Small ICBM Hard Mobile Launcher (outdoors)
- Peacekeeper Rail Garrison (outdoors)
- Fairchild C-119J Flying Boxcar

Satellites

- Northrop OV2-5 Space Satellite
- Lockheed Research Satellite Engineering Development Model

- Block IV Meteorological Data Satellite
- DSP Satellite
- Teal Ruby Satellite
- LTV ASAT Missile
- Agena Space Vehicle
- TACSAT
- Discoverer XIV
- EROS Reflector

Manned Spaceflight

- Mercury Spacecraft
- Gemini Spacecraft
- Apollo 15 Command Module
- Marquardt Space Sled
- Manned Maneuvering Unit

Space Research

- Aerojet Aerobee Rocket
- North American X-15A-2
- Lockheed X-17
- Martin X-24A
- Martin X-24B
- Manhigh II Gondola
- Stargazer Gondola
- Excelsior Gondola
- ASV-3 ASSET Lifting Body
- SV-5D PRIME Lifting Body
- Boost Glide Reentry Vehicle

Presidential Gallery

- Douglas VC-54C "Sacred Cow"
- Douglas VC-118 "Independence"
- Lockheed VC-121E "Columbine III"
- Bell UH-13J Sioux
- Boeing VC-137C
- Beech VC-6A
- Aero Commander U-4B
- North American T-39A Sabre Liner
- Lockheed VC-140B Jetstar
- North American F-100D Super Sabre
- Piper J-3 Cub
- Fairchild Model 24-C8F
- Beech C-45H Expedito

Research and Development/Flight Test Gallery

- Bell P-59B Airacomet
- Fisher P-75A
- Convair XP-81
- McDonnell XH-20 Little Henry
- American Helicopter XH-26
- Republic XF-91 Thunderceptor
- Convair XF-92A
- McDonnell XF-85 Goblin
- Republic YRF-84F Ficon
- Republic XF-84H
- North American F-107A
- Lockheed YF-12A
- North American XB-70 Valkyrie
- Chance-Vought/LTV XC-142A
- Hawker Siddeley XV-6A Kestrel
- Bell XGAM-63 Rascal
- Northrop SM-62 Snark
- Boeing YQM-94A Compass Cope B
- McDonnell Douglas YF-4E Phantom II
- Lockheed NT-33A
- AFTI F-16
- Piper PA48 Enforcer
- Dark Star
- Lockheed P-80R
- McDonnell Douglas F-15 Streak Eagle
- Bell X-1B
- Douglas X-3 Stiletto
- Northrop X-4
- Bell X-5
- Lockheed X-7A
- North American X-10
- Ryan X-13 Vertijet
- Bensen X-25A Gyrocopter
- Grumman X-29A
- De Havilland DH 89 Dominie

Storage

- Albatros D.VA
- American Helicopter H-26
- Casa 2.111H (Spanish He 111)
- Convair XF-81
- Corben Super Ace
- Douglas A-1H Skyraider
- Douglas B-23 Dragon
- Douglas C-39
- Douglas O-46A
- Ercoupe 415 (YO-55)
- Fairchild PT-26 Cornell
- Fairchild T-46A
- Luscombe 8A (UC-90)
- Mikoyan-Gurevich MiG-21PF
- Mikoyan-Gurevich MiG-29A
- Northrop-McDonnell Douglas YF-23
- Pratt-Read TG-32
- Schweizer TG-3
- Sukhoi Su-22M4

Air Park

- Fairchild Republic A-10A Thunderbolt II
- Convair C-131D Samaritan
- Northrop YC-125B Raider
- Junkers Ju 52
- Boeing EC-135E ARIA
- Boeing NKC-135A Airborne Laser Lab (ALL)
- Peacekeeper Rail Garrison Car
- Lockheed C-60A Lodestar
- Fairchild C-119J Flying Boxcar
- Fairchild C-82 Packet